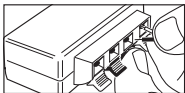


Power Distribution Module Instructions:

Wireless Remote Power Module consists of: Power Distribution Module with switch & fuse, double sided tape, cable ties, & instructions.

1. Before installing **Power Distribution Module**, please note that the Module has its own in-line switch which can turn on and off all accessories in unison. If you do not want to use the additional switches built into the individual **ElectroPods** accessories, simply cut them off.
2. After installing light Pods, locate desired position for **Power Distribution Module**. **Important: Mount Distribution Module in a dry area of the motorcycle to prevent a shortage.** (See Diagram at right).
3. Clean back of desired mounting location thoroughly before mounting. Remove backing from one side of double-sided foam tape and attach to back of the Module. Remove backing from the other side of the double-sided foam mounting tape, and attach to desired location.
4. Connect accessory lighting into Module by inserting wires into the spring clip terminals: open terminal by pushing down on cable grip and inserting into terminal opening as shown below. Up to 20 motorcycle Pods or 10 automobile Pods can be inserted into the Module. Positive wires insert in to red terminals, black wires insert into black terminals. Pod wires can be twisted together before inserting into Module, as long as positive in combined with positive and negative is combined with negative.

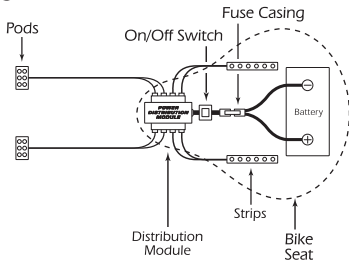


5. Connect module to motorcycle battery (12V) as shown at right.
6. Based on the placement of the lights, you may have excess wire. Retain with supplied cable ties (included in package) and locate away from moving parts.

Warning:

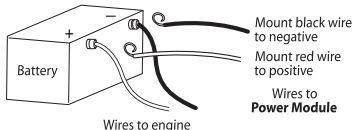
Do not mount in a position that could impair or distract you or others from operating a motor vehicle. Use caution when mounting and routing wires to avoid all moving parts. **Especially take note to not interfere with full motion of steering.** If you are unsure of the installation procedure, please consult a qualified automotive/motorcycle installer. This product is not intended for the use of children under the age of 7 years. Some states prohibit the use of specific light colors on motor vehicles; check local rules and regulations before installing on exterior. Please obey all traffic laws.

Diagram:



This diagram does not depict all motorcycle layouts. Please consult the Owner's Manual for exact positioning of the battery.

Attaching To Battery:



1. Turning counterclockwise, loosen the negative (black) battery terminal connecting battery to engine.
2. Wrap black **Power Module** wire around negative pole clockwise. Additional insulation may need to be stripped from wire. Re-tighten terminal leaving the wires to the engine in place.
3. Turning counterclockwise, loosen the positive (red) battery terminal connecting battery to engine.
4. Wrap red **Power Module** wire around positive pole clockwise. Re-tighten terminal leaving wires to the engine in place.